

LIQUID-SPECIFIC PRODUCT LINE: CAST IRON PUMPS

RTPg Series™

Section	1479
Page	1479.1
Issue	A

TABLE OF CONTENTS

Related Products	1
Operating Range.....	1
Series Description	1
Features & Benefits	1
Model Number Key	2
Specifications	2
Standard Materials of Construction	2
Cutaway View & Pump Features	3
Dimensions – RTPg20	4
Dimensions – RTPg30	5
NPSH Required	6

RELATED PRODUCTS

Steel Externals, RTP® Series: Catalog Section 1727

Steel Externals, RTPe Series™: Catalog Section 1768

RTPg30



SERIES DESCRIPTION

The RTPg Series is a cast iron internal gear pump design specifically for Liquid Bulk Transport. The RTPg is a cost effective alternative for applications that do not require stainless steel. It is a great solution for transferring Lubricants, Crude Oil, Fuels, Asphalt, Fertilizers, and much more. The RTPg can provide flows up to 170 GPM (38 m³/h).

FEATURES & BENEFITS

- Modular porting
 - » Accepts ANSI 4 bolt flange and NPT
- L-Pro™ PTFE double lipseal design
 - » The seal is designed with excellent wear and low friction characteristics to provide longer life and withstand some inevitable dry run.
 - » Seal is located behind the rotor and isolates the shaft support bearings from the process fluid
- Ease of maintenance
 - » Shaft support bearing are seal for life and do not require greasing.
 - » There is only one bushing running in the process fluid.
 - » Easily rebuildable with time saving seal, rebuild, and overhaul kits available.
- Drop in mounting foot for easy competitor replacement.
- Internal gear design allows for bidirectional operation from the factory*

*Internal Relief Valve only provides protection in one direction.

OPERATING RANGE

SERIES	NOMINAL FLOW		MAXIMUM PRESSURE		TEMPERATURE RANGE		VISCOSITY RANGE	
	GPM	m³h	PSI	Bar	°F	°C	SSU	cSt
RTPg Series™	0 to 170	to 38	125	8.6	to 250	to 120	to 2,500	to 540

Section	1479
Page	1479.2
Issue	A

**LIQUID-SPECIFIC PRODUCT LINE:
CAST IRON PUMPS**
RTPg Series™

MODEL NUMBER KEY



SPECIFICATIONS

Model Number	Standard Port Size	Nominal Pump Rating (100 SSU & below)			Displacement		Maximum Differential Pressure		Maximum Recommended Temperature for Standard Pump		Approx. Shipping Weight with Grease	
	Inches	GPM	m ³ /h	RPM	USG/rev.	l/rev.	PSIG	BAR	°F	°C	Lbs.	Kg.
RTPg20	2	135	30	600	0.225	0.85	125	8.6	250	120	138	63
RTPg30	3	170	38	600	0.283	1.07	125	8.6	250	120	156	71

STANDARD MATERIALS OF CONSTRUCTION

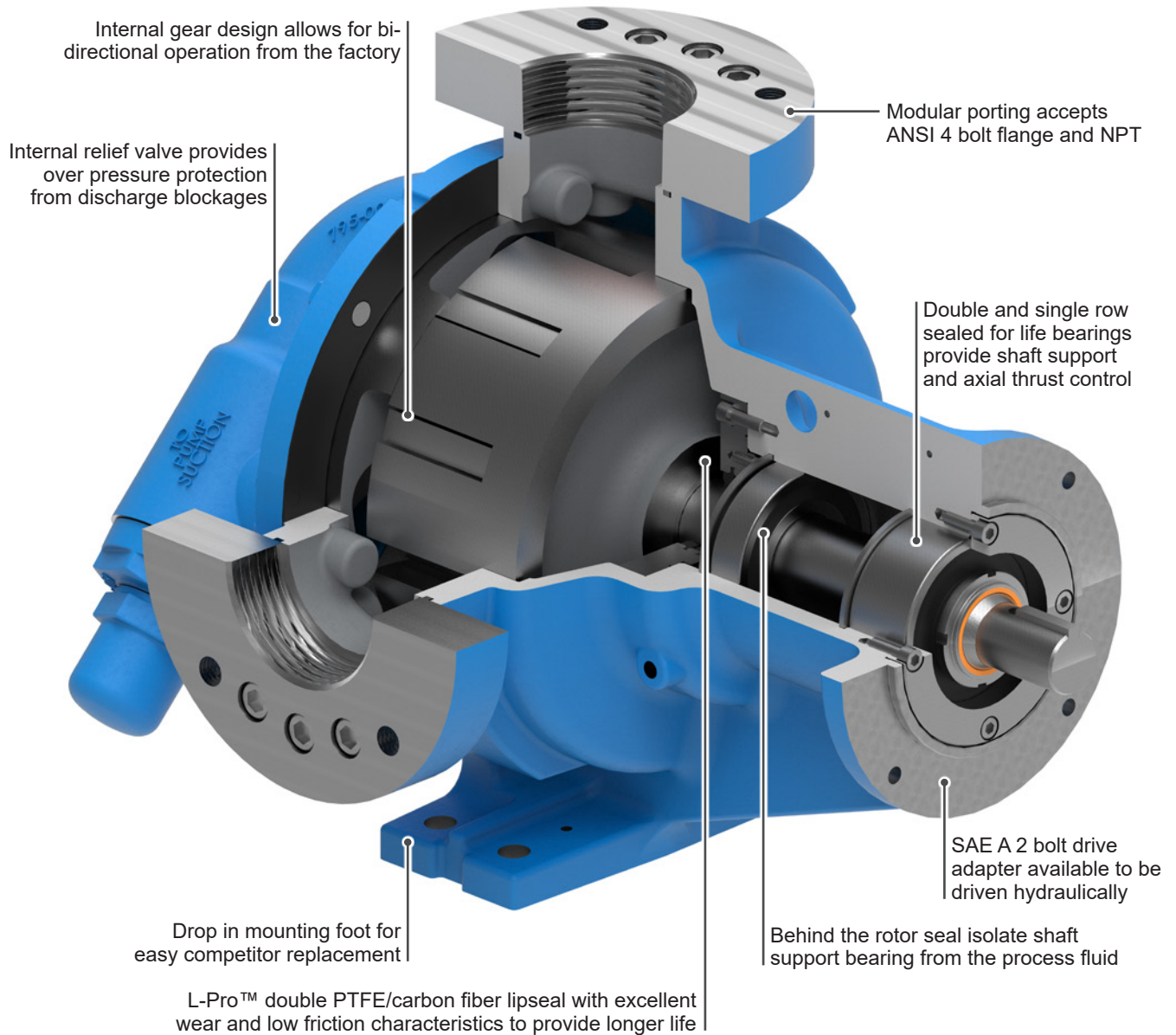
Component	Standard Material
Casing	Iron
Head	Iron
Rotor	Iron
Rotor Shaft	Hardened Steel
Idler	Iron
Idler Pin	Hardened Steel
Idler Bushing	Carbon Graphite
Seal	PTFE / Carbon Fiber
Internal Relief Valve	Iron

LIQUID-SPECIFIC PRODUCT LINE: CAST IRON PUMPS

RTPg Series™

Section	1479
Page	1479.3
Issue	A

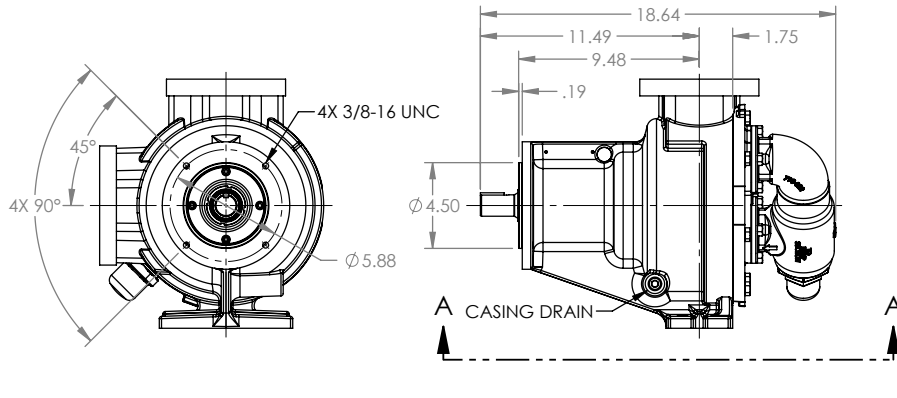
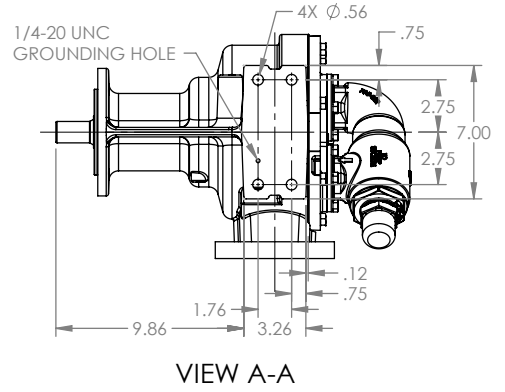
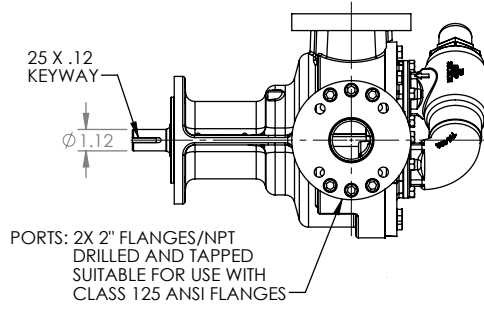
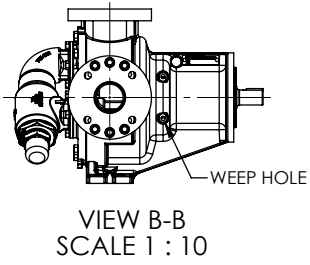
CUTAWAY VIEW & PUMP FEATURES



Section	1479
Page	1479.4
Issue	A

**LIQUID-SPECIFIC PRODUCT LINE:
CAST IRON PUMPS**
RTPg Series™

DIMENSIONS – RTPg20

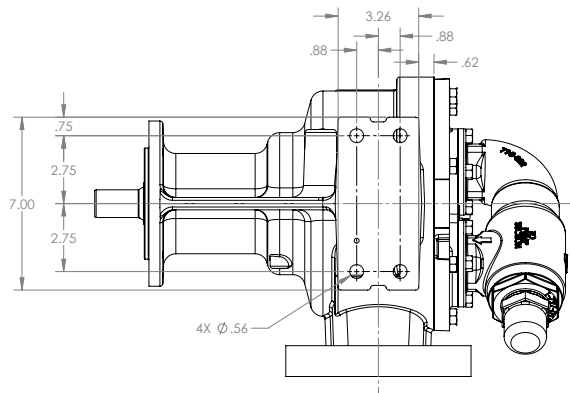
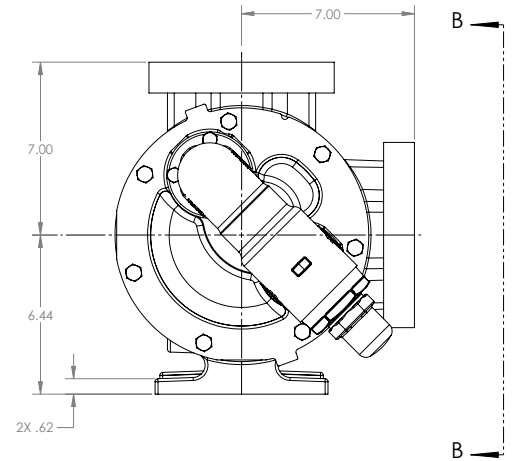
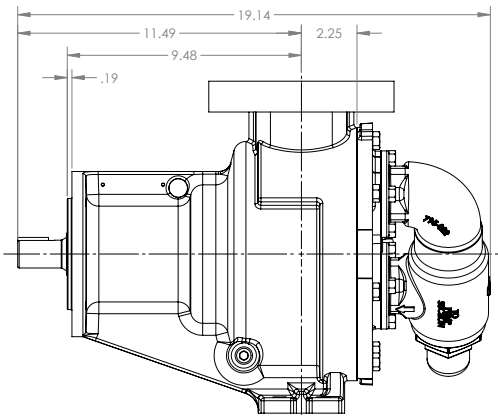
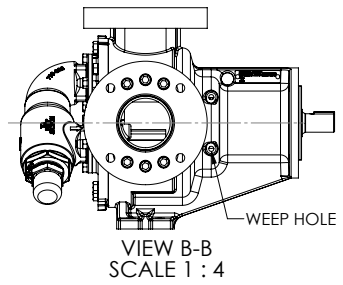
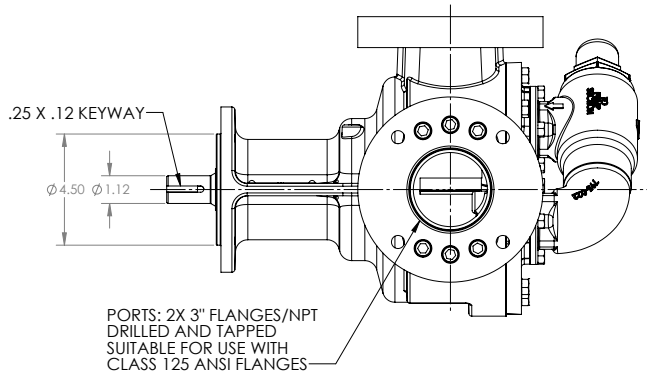


LIQUID-SPECIFIC PRODUCT LINE: CAST IRON PUMPS

RTPg Series™

Section	1479
Page	1479.5
Issue	A

DIMENSIONS – RTPg30



Section	1479
Page	1479.6
Issue	A

**LIQUID-SPECIFIC PRODUCT LINE:
CAST IRON PUMPS**
RTPg Series™

NPSH REQUIRED

Printed performance curves are not available.

Performance curves can be electronically generated with the Viking Pump Curve Generator on vikingpump.com.

NPSH_R data is not available on the curve generator.

NPSH (Net Positive Suction Head): The NPSH_R (Net Positive Suction Head Required by the pump) is given in the table below and applies for viscosities through 750 SSU. NPSH_A (Net Positive Suction Head – Available in the system) must be greater than the NPSH_R. For a complete explanation of NPSH, see Application Data Sheet AD-19.

FOR VISCOSITIES UP TO 750 SSU – See NPSH_R table below.

NPSH_R for high viscosities can be estimated using the following method:

1. Calculate line loss for a 1 foot long pipe of a diameter matching the pump inlet port size. Use your flow rate and max viscosity.
2. Convert this value into Feet of Liquid (S.G. 1.0)
3. Add this value to the NPSH_R value in the chart below.

PUMP SIZE	PUMPS SPEED, RPM					
	100	200	300	400	500	600
20	2.1	2.2	3.1	4.7	7.1	10.2
30	2.1	2.2	3.1	4.7	7.1	10.2

NPSH_R – FEET OF LIQUID (Specific Gravity 1.0), Viscosities up to 750 SSU



VIKING PUMP, INC.
A Unit of IDEX Corporation
406 State Street
Cedar Falls, Iowa 50613 U.S.A.
vikingpump.com

Authorized Distributor Viking Pump

PT ZI-TECHASIA
Address: Menara Jamsostek,
Menara Utara lantai 22, Jakarta Selatan
DKI Jakarta

Mobile/WA : (+62) 813-1891-9776
Office : (+62) 21 5296-2135
Email : ask@dosingpump.co.id

website : www.dosingpump.co.id

VIKING PUMP • A Unit of IDEX Corporation • Cedar Falls, IA ©2025