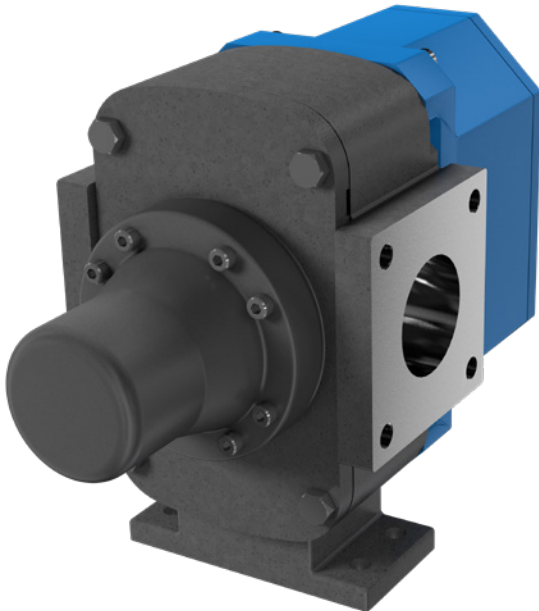




RTPe SERIES™

ROTARY LOBE | CHEMICAL TANKER PUMP | GENERAL & SPECIALTY CHEMICAL PRODUCT LINE



THE “ESSENTIAL” COMPONENT IN YOUR CHEMICAL TANKER SYSTEM

For years, chemical transporters have relied on cast-iron pumps that risk contaminating the chemicals carried in stainless steel road tankers. The RTPe Series™ changes that.

Purpose-built for the chemical transport industry, the RTPe stainless steel pump delivers the missing link your tanker system has always needed — true material compatibility from tank to pump.

Backed by the proven performance of the industry-leading hygienic RTP® Series, the RTPe includes every feature essential for chemical tanker operations, without the unnecessary extras. The result: a cost-effective, high-performance pump that outpaces cast-iron competitors in both speed and reliability.

Protect your product. Protect your tanker. Strengthen your operation.

The RTPe is the essential stainless-steel pumping solution designed to complete your chemical tanker system — and elevate your business.

FEATURES & BENEFITS

CLEANABILITY

- The simple behind the rotor design makes strip cleaning easy and fast
- Choose the cleaning process that fits your needs: COP (Clean Out of Place) or CIP (Clean In Place)

EASE OF MAINTENANCE

- Innovative front loading seal design enables quick inspection and easy servicing
- Aluminum sealed for life gearbox is immune to washdown contamination, maintenance free, and light weight
- Easy to service design requires no special tools for disassembly and eliminates need for end clearance adjustments

PERFORMANCE

- Versatile chemical resistance
- Designed to transfer both low- and high-viscosity liquids efficiently, with enhanced pressure performance for faster load and unload cycles
- Optimized displacement-to-weight ratio so you store more product and carry less equipment. (1L/rev. / 0.264 USG/rev)
- Precision helical gears, rotors and shaft design, with optimized bearing position, minimize overhung load – extending seal & bearing life



CAPACITY
to 264 GPM
(60 m³/h)



PRESSURE
to 145 PSI
(10 BAR)



VISCOSITY
to 910,000 SSU
(200,000 cSt)



TEMPERATURE
to +230°F
(+110°C)

PORTING

- ASA150 flange bolting pattern
- Other port options available

SEALING

- Mechanical seal
- Dry-run capable composite O-ring seals
- FFKM/PTFE or FKM elastomers

GEAR BOX

- Ingress protected and sealed maintenance-free gearbox
- Low weight

ROTOR & CASING OPTIONS

- 316L stainless steel wet end construction

MOUNTING

- SAE-A 2 or 4 bolt hydraulic drive
- Drop-in foot and pipework to common cast iron alternatives

OPTIONS

- Ultra-compact bi-directional internal relief valve

TYPICAL APPLICATIONS

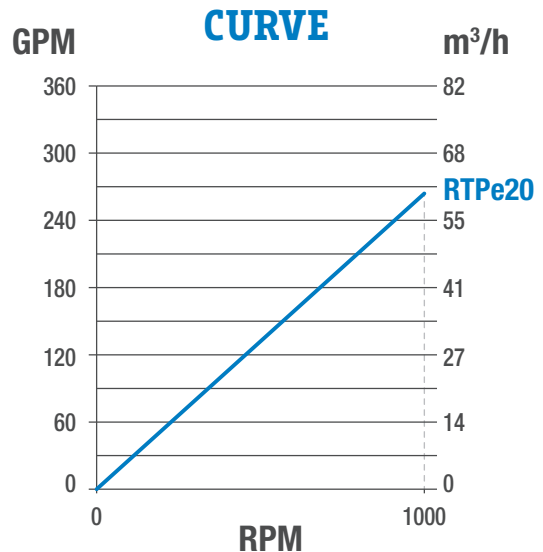
- Caustics
- Fertilizers
- Pesticides
- Corrosives
- Herbicides
- DEF

PARTS KITS

- Complete, all-in-one kits eliminate part chasing and help get trucks road-ready fast—saving time, labor, and money.
 - Seal Kits – Quick, efficient seal replacement for routine service
 - Repair Kits – Complete solutions for more involved pump repairs

WHY CHOOSE THE RTPe?				
Your Needs	RTPe	RTP	Competitor Stainless	Competitor Cast Iron
All 316L Stainless Steel Wet End	✓	✓	✓	✗
Low Cost	✓	✗	✗	✓
Dry-Run Capable Seals	✓	✗	✗	✗
Bi-Directional Pump as Standard	✓	✓	✓	✗
Ultra-Compact Bi-Directional Relief Valve	✓	✗	✗	✗
Designed Specifically for Tank Truck Trailers	✓	✓	✓	✗
Speeds to 1000 rpm	✓	✓	✗	✗
Ingress Protected & Sealed Maintenance-Free Gearbox	✓	✓	✗	✗
Solids Handling	✓	✓	✗	✗
Zero Product Contamination from Rotors	✓	✓	✓	✗
Easy Mount Adapter Plate Available	✓	✗	✗	✗

✓ Yes ✗ No/Not Ideal or Limitations



VIKING PUMP, INC.
 A Unit of IDEX Corporation
 406 State Street
 Cedar Falls, Iowa 50613 U.S.A.
vikingpump.com

CONTACT YOUR STOCKING DISTRIBUTOR TODAY

Authorized Distributor Viking Pump

PT ZI-TECHASIA
 Address: Menara Jamsostek,
 Menara Utara lantai 22, Jakarta Selatan
 DKI Jakarta

Mobile/WA : (+62) 813-1891-9776
 Office : (+62) 21 5296-2135
 Email : ask@dosingpump.co.id

website : www.dosingpump.co.id

