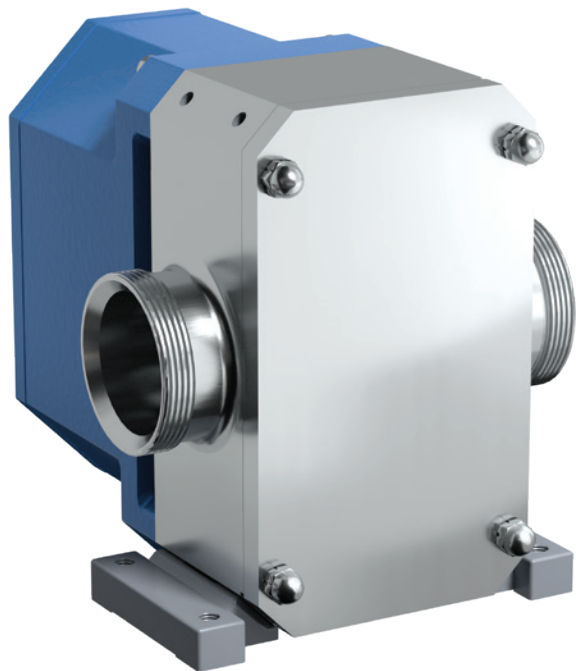




RTP® SERIES™

ROTARY LOBE | STAINLESS STEEL HYGIENIC TANKER PUMP | FOOD GRADE PRODUCT LINE



THE COMPLETE SOLUTION FOR YOUR HYGIENIC TANKER SYSTEM

Designed specifically for the hygienic stainless steel road tanker industry, the RTP® Series outperforms the competition by providing higher capacity, higher pressure and unmatched efficiency. The RTP® Series can also reduce loading and unloading time by over 30%.

This increased performance, along with advanced durability, application flexibility, ease of installation and ease of maintenance provide a complete solution for your hygienic tanker needs.

FEATURES & BENEFITS

CLEANABILITY

- The simple behind the rotor design makes strip cleaning easy and fast
- Choose the cleaning process that fits your needs: COP (Clean Out of Place) or CIP (Clean In Place)

EASE OF MAINTENANCE

- Innovative front loading seal design enables quick inspection and easy servicing
- Aluminum sealed for life gearbox is maintenance free, light weight, and immune to washdown contamination
- Easy to service design requires no special tools for disassembly and eliminates need for end clearance adjustments

PERFORMANCE

- Easily handles higher viscosity liquids with improved pressure capabilities for faster unloading
- Excellent displacement/weight ratios, meaning more in the tank & less in the cabinet
- Precision helical gears, rotors & shaft design, with optimized bearing position, minimize overhung load – extending seal & bearing life

PERFORMANCE

MODELS

Model	Displacement		Max Pressure		Max Speed	Standard Ports		Max Capacity		Max Temperature	
	USG/rev.	l/rev.	PSI	BAR	RPM	In	mm	GPM	m³/h	°F	°C
RTP20	0.264	1	145	10	1000	2 or 3	50 or 75	264	60	230	110
RTP30	0.338	1.28	174	12	1000	3 or 4	75 or 100	338	76.8	300	150



CAPACITY
to 338 GPM
(76.8 m³/h)



PRESSURE
to 174 PSI
(12 BAR)



VISCOSITY
to 910,000 SSU
(200,000 cSt)



TEMPERATURE
to +300°F
(+150°C)

PORTING

Camlock, ACME & DIN 11851 ports available

SEALING

- Single / Double O-ring
- Mechanical seals
- Complete range of material options

GEAR BOX

Ingress protected and sealed lightweight aluminum gearbox

ROTOR & CASING OPTIONS

- 316L stainless steel pump casing standard with interior finished to 3-A standards
- High efficiency rotors for low viscosity fluids

MOUNTING

SAE 2 & 4 bolt mounting flange for close coupled hydraulic drive applications

OPTIONS

Optional pressure relief valve to protect pump against excess pressure spikes

TYPICAL APPLICATIONS

- High Fructose Corn Syrup
- Chocolate
- Milk and Dairy
- Vinegar
- Fruit Juice
- Vegetable Oils

PARTS KITS

Complete, all-in-one kits eliminate part chasing and help get trucks road-ready fast—saving time, labor, and money.

- Seal Kits – Quick, efficient seal replacement for routine service
- Repair Kits – Complete solutions for more involved pump repairs



VIKING PUMP, INC.
A Unit of IDEX Corporation
406 State Street
Cedar Falls, Iowa 50613 U.S.A.
vikingpump.com

CONTACT YOUR STOCKING DISTRIBUTOR TODAY

Authorized Distributor Viking Pump

PT ZI-TECHASIA
Address: Menara Jamsostek,
Menara Utara lantai 22, Jakarta Selatan
DKI Jakarta

Mobile/WA : (+62) 813-1891-9776
Office : (+62) 21 5296-2135
Email : ask@dosingpump.co.id

website : www.dosingpump.co.id

WHY CHOOSE THE RTP?

Your Needs	RTP	RTPe	Competitor
FDA compliant (GRAS) & 3A Certified	✓	✗	✓
Dry-Run Capable Seal*	✗	✓	✗
Reduces loading and unloading time by over 30%	✓	✗	✗
Ingress Protected & Sealed Maintenance-Free Gearbox	✓	✓	✗
Pump design reduces overhung load, vibration, and pipe stress	✓	✓	✗
Smallest footprint and lowest weight	✓	✓	✗
Solids Handling	✓	✓	✓
All 316L Stainless Steel Wet End	✓	✓	✓
Multiple Port Options	✓	✗	✓
4-Way Mounting Feet	✓	✗	✗

✓ Yes ✗ No/Not Ideal or Limitations

* consult Representative for details

CURVES

